



Wright Marshall
Estate Agents

136 Heaton Moor Road, Stockport, SK4 4JY



£280,000

1 Princess Street, Knutsford, Cheshire, WA16 6BY
T. 01565 621624
Knutsford@wrightmarshall.co.uk /
Cheshirelettings@wrightmarshall.co.uk



Situated in a beautiful converted Victorian Villa this individually designed large two double bedroom penthouse apartment offers spacious modern living with the convenience of being a 5 minute walk from both Heaton Moor Train Station and the quaint village centre.

Description

Set within a small, private development, this notably spacious bespoke apartment (over 1,000 sq. ft.) offers a unique blend of character and modern living.

The property briefly comprises:

An entrance vestibule with space for coats and shoes.

A staircase opening into a generous hallway, leading to an inner hall.

A fully fitted modern kitchen with a range of integrated appliances.

A double guest bedroom with its own en-suite shower room.

A part-vaulted open-plan lounge/dining room with exposed beams.

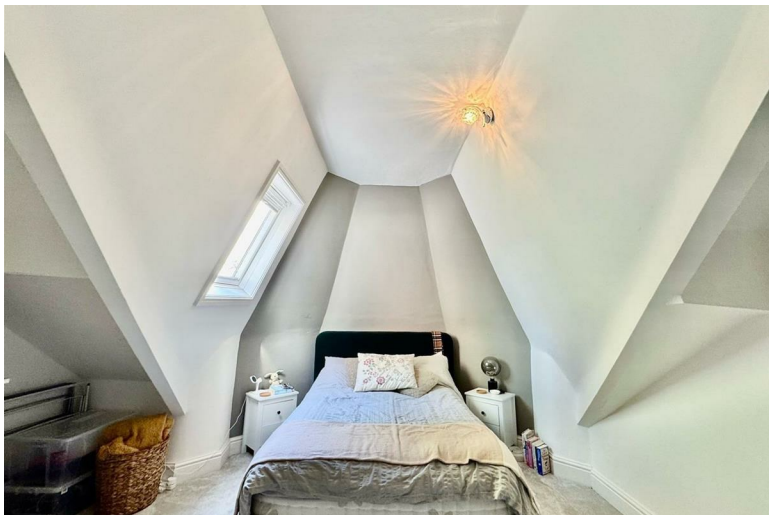
A beautifully finished master bedroom, featuring fitted wardrobes along one wall and a striking vaulted turret ceiling, perfectly designed for a recessed bed. This room is served by a stylish three-piece bathroom.

Externally, the property is approached via original dressed sandstone pillars, leading to a tarmac driveway with parking for each apartment. Beyond this lies a well-maintained private lawn and communal garden. This apartment also benefits from two allocated parking spaces.

The property is offered to the market with no onward chain.

Lease: 999 years.





These particulars, whilst believed to be accurate are set out as a general outline only for guidance and do not constitute any part of an offer or contract. Intending purchasers should not rely on them as statements of representation of fact, but must satisfy themselves by inspection or otherwise as to their accuracy. No person in this firm's employment has the authority to make or give any representation or warranty in respect of the property.